

# Can Can Trumpet Viola Cello

Trumpet

♩ = 120

8

13

The image shows a musical score for a Trumpet part. It consists of three staves of music. The first staff is labeled 'Trumpet' and has a tempo marking '♩ = 120'. The key signature is one sharp (F#) and the time signature is 2/4. The melody starts on a middle C (C4) and proceeds with eighth and sixteenth notes. The second staff begins at measure 8 and continues the melody. The third staff begins at measure 13 and ends with a double bar line and repeat dots. The notes are: Staff 1: C4, D4, E4, F#4, G4, A4, B4, C5, D5, E5, F#5, G5, A5, B5, C6. Staff 2: D5, E5, F#5, G5, A5, B5, C6, D6, E6, F#6, G6, A6, B6, C7. Staff 3: D6, E6, F#6, G6, A6, B6, C7, D7, E7, F#7, G7, A7, B7, C8.

# Can Can Trumpet Viola Cello

♩ = 120

Viola



9



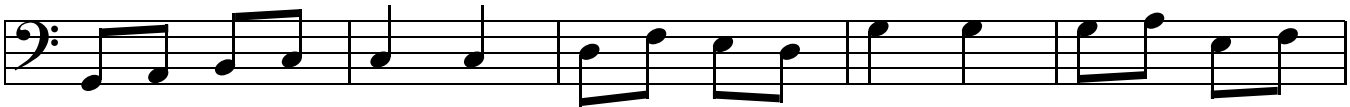
# Can Can Trumpet Viola Cello

$\text{♩} = 120$

Violoncello



8



13

